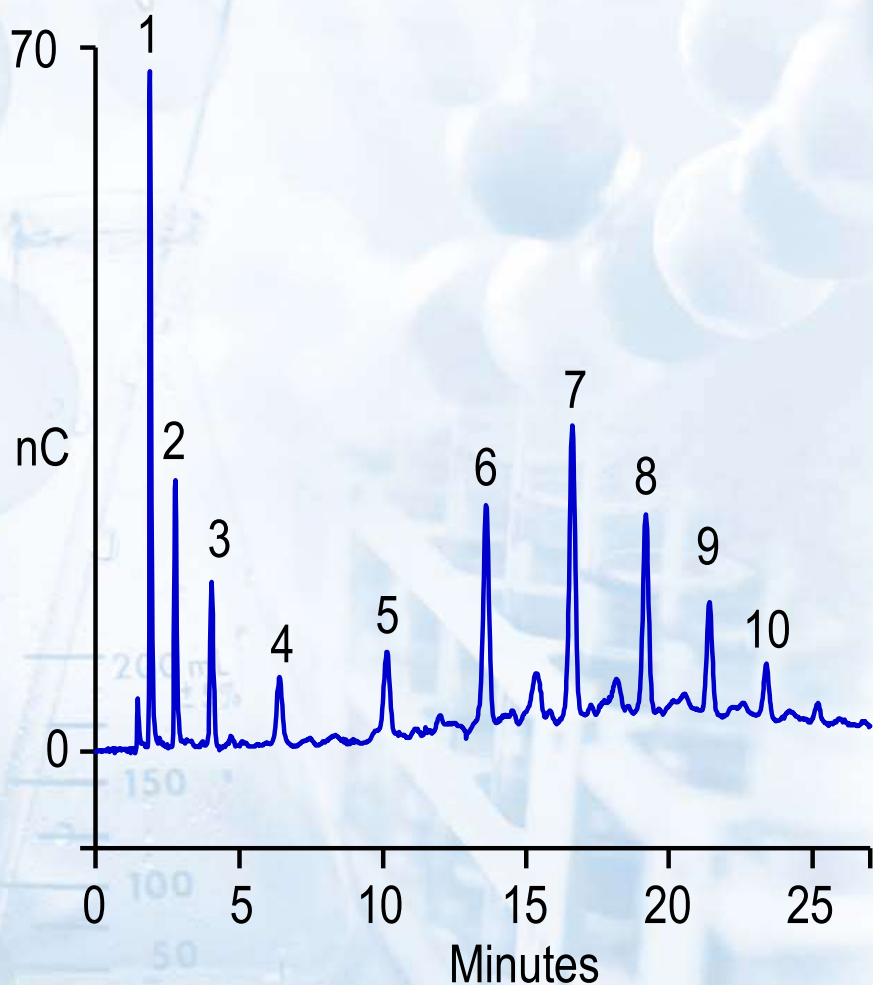


Separation of Maltose Oligomers

Column: CarboPac™ PA-100 and guard
Eluent: NaOH/sodium acetate gradient
Flow Rate: 1.0 mL/min
Inj. Volume: 10 μ L
Detection: Pulsed amperometry, Au electrode



Peaks:

1. Glucose
2. Maltose
3. Maltotriose
4. Maltotetraose
5. Maltopentaose
6. Maltohexaose
7. Maltoheptaose
8. Maltooctaose
9. Maltononaose
10. Maltodecaose